



## VECTOR IRIDIUM\* DATA LINK (VIDL)

VIDL is a commercially available ruggedized Iridium\* satellite link voice radio equipped with GPS positioning. The VIDL deploys quickly without complex system architecture and easily integrates with other existing C2 Software. The VIDL operates in a Push-To-Talk (PTT) mode like most common tactical radios and is equipped with a voice speaker so you can monitor traffic from a distance.

Vector Iridium\* Data Link (VIDL) uses the Iridium\* Push-To-Talk (PTT) service and provides global coverage with short transmission

paths, strong signals, low latency, and shorter registration time than with other satellite systems. Unique to Iridium\*, this architecture provides inherent advantages in performance and reliability over other mobile satellite services providers. United States Government architectures are supported separately and qualified customers may leverage the future Defense Information Systems Agency (DISA) Managed Access program.



VIDL

### VIDL CAPABILITIES

- ▶ True Global Communications with Iridium\* Push-to-Talk Satellite Network
- ▶ Deploys Quickly without Complex System Architecture
- ▶ Coverage Independent of Ground Infrastructure
- ▶ Integrated GPS Positioning
- ▶ Data Link for Voice, Text and Reporting
- ▶ Built-in AES-256 Encryption
- ▶ Rugged Lightweight Design
- ▶ Easily Integrates with Existing Command-Control Software
- ▶ Unlimited Number of Users Worldwide
- ▶ Fully Exportable to Partner Nations

### AVAILABLE COMPONENTS

- ▶ Amplified speaker
- ▶ Compact Iridium\*/GPS Antenna
- ▶ ATAK/WinTAK Application
- ▶ Alternate Antennas and Mounts
- ▶ Laser Range Finder
- ▶ Network Radio Gateway
- ▶ Alternate Deployable Case Configurations

IridiumPTT-VIDL-PF Rev 02

## VIDL SPECIFICATIONS

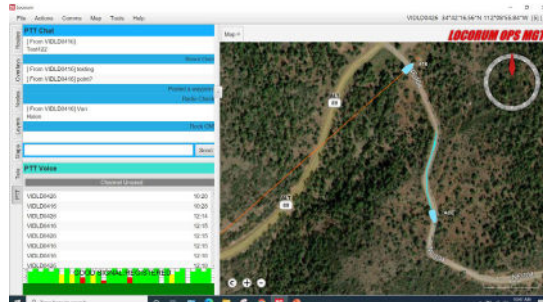
- ▶ Dimensions: 170x120x56mm
  - ▶ Weight: 0.64kg
  - ▶ Power Requirements: 9-32 VDC
  - ▶ Power Consumption: < 0.4A @12 VDC
  - ▶ Transmit Power: 7W max
  - ▶ Frequency Range: 1616to 1626 GHz
  - ▶ Satellite Constellation: Iridium\*
  - ▶ Environmental Protection: IP68 (immersion)
  - ▶ Operating Temperature: -30 to +70 deg C
- ▶ Interfaces:
    - ▶ Audio: U-329, 6-pin circular connector
    - ▶ Antenna: 2x SMA (GPS/satellite)
    - ▶ Data: Ethernet Serial Port (sensor data input)
    - ▶ Power: MS-3106-12S-3P



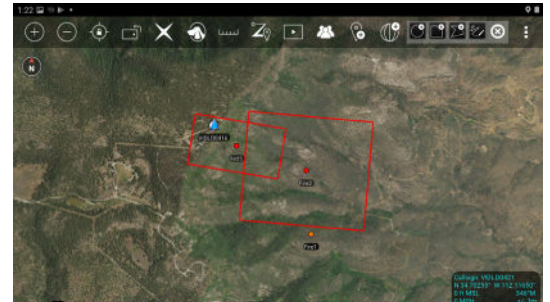
## ENHANCE VIDL CAPABILITIES



V-TACS



Lorocum Operations Management Application



ATAK/WinTAK Application

## IRIDIUM SUBSCRIPTIONS

VIDL Iridium\* PTT access requires a subscription or airtime plan that can vary in cost based on amount of coverage required. Plans include unlimited Push-To-Talk voice, text and position machine to machine data.

Contact us and we can arrange a plan that makes the most sense for you. Parraid is prepared to help design a coverage plan based on your requirement or use case.

\*<http://www.iridium.com>

\*\*<http://www.devil-tech.com>



DESIGN | BUILD | SUPPORT

©2020 Parraid, Inc. All rights reserved. Parraid and RUR are trademarks of Parraid, LLC. All other marks are the properties of their respective owners.

IridiumPTT-VIDL-PF Rev 02

Parraid, LLC...A Small Business!  
Phone: +1.301.690.0690

44150 Smartronix Way • Suite 100 • Hollywood, MD 20636  
sales@parraid.com • www.parraid.com • international\_sales@parraid.com



CMMIDEV/3<sup>SM</sup>  
Exp. 2023-09-03 / Appraisal #8526